



JANUARY 2003

LOCAL CLIMATOLOGICAL DATA

NOAA, National Climatic Data Center

MARQUETTE, MI

MARQUETTE MICHIGAN COUNTY ARPT (MQT)
 Lat: 46°32' N Long: 87°34' W Elev (Ground): 1415 Feet
 Time Zone: EASTERN WBAN: 94850 ISSN #:0198-2648

DATE	TEMPERATURE °F						DEG DAYS BASE 65°		WEATHER	SNOW/ICE ON GND(IN)		PRECIPITATION (INCHES)		PRESSURE (INCHES OF HG)		WIND SPEED = MPH DIR = TENS OF DEGREES						DATE	
	MAXIMUM	MINIMUM	AVERAGE	DEP FROM NORMAL	AVERAGE DEW PT	AVERAGE WET BULB	HEATING	COOLING		0700 LST	1300 LST	2400 LST	2400 LST	AVERAGE STATION	AVERAGE SEA LEVEL	RESULTANT SPEED	RES DIR	AVERAGE SPEED	MAXIMUM				
										DEPTH	WATER EQUIV	SNOW FALL	WATER EQUIV						SPEED	DIR	SPEED		DIR
1	2	3	4	5	6	7	8	9	11	12	13	14	15	16	17	18	19	20	21	22	23	24	
01	23	7	15	2			50	0		6		1.0	0.02									01	
02	26	11	19	6			46	0		6		0.0	0.00									02	
03	30	3	17	5			48	0		5		0.0	0.00									03	
04	32	3	18	6			47	0		5		0.0	0.00									04	
05	30	20	25	13			40	0		5		1.4	0.07									05	
06	26	16	21	9			44	0		7		0.8	0.02									06	
07	43	26	35	23			30	0		7		0.0	0.00									07	
08	48*	26	37*	25			28	0		6		0.0	T									08	
09	38	13	26	14			39	0		5		2.4	0.13									09	
10	14	7	11	0			54	0		7		2.8	0.05									10	
11	17	9	13	2			52	0		9		3.1	0.04									11	
12	18	4	11	0			54	0		8		0.3	T									12	
13	10	5	8	-3			57	0		8		0.5	0.02									13	
14	9	-3	3	-8			62	0		8		0.0	T									14	
15	16	3	10	-1			55	0		8		0.0	T									15	
16	18	6	12	1			53	0		8		1.3	0.04									16	
17	21	5	13	2			52	0		8		0.0	T									17	
18	15	5	10	-1			55	0		8		2.0	0.10									18	
19	11	1	6	-5			59	0		10		0.6	0.03									19	
20	8	-6	1	-10			64	0		10		0.6	0.02									20	
21	5	-15	-5	-16			70	0		10		0.1	T									21	
22	0	-9	-4	-15			69	0		10		0.5	0.01									22	
23	9	-1	4	-7			61	0		10		0.8	0.01									23	
24	11	4	8	-3			57	0		11		0.0	T									24	
25	11	0	6	-5			59	0		11		0.5	0.02									25	
26	0	-10	-5*	-16			70	0		11		0.1	T									26	
27	8	-17*	-4	-15			69	0		11		1.2	0.05									27	
28	19	7	13	1			52	0		12		3.2	0.07									28	
29	16	-7	5	-7			60	0		14		0.0	T									29	
30	30	7	19	7			46	0		13		0.0	0.00									30	
31	28	23	26	14			39	0		12		0.0	T									31	
19.0		4.6	11.8	■ ■			52.9	0.0	< MONTHLY AVERAGES	TOTALS->		23.2	0.70									<- MONTHLY AVERAGES	
-.7		1.3	0.3	■ ■			->-----DEPARTURE FROM NORMAL-----<					-1.90		SUNSHINE, CLOUD, & VISIBILITY TABLES ON PAGE 3									
DEGREE DAYS									GREATEST 24-HR PRECIPITATION: 0.13 DATE :09				SEA LEVEL PRESSURE DATE TIME										
MONTHLY TOTAL DEPARTURE									GREATEST 24-HR SNOWFALL: 5.0 DATE :10-11				MAXIMUM MINIMUM :										
SEASON TO DATE TOTAL DEPARTURE									GREATEST SNOW DEPTH: 14 DATE : 29				PRECIPITATION ≥ 0.01 INCH : 16										
HEATING: 1641 -18									NUMBER OF DAYS WITH →				MAXIMUM TEMP ≥ 90: 0				PRECIPITATION ≥ 0.10 INCH : 2						
COOLING: 0 0													MINIMUM TEMP ≤ 32 : 31				SNOWFALL ≥ 1.0 INCH : 9						
													MAXIMUM TEMP ≤ 32 : 28										
													MINIMUM TEMP ≤ 0 : 9										
													HEAVY FOG :										

JANUARY 2003
MARQUETTE, MI

REFERENCE NOTES & SUPPLEMENTAL SUMMARIES

* = Extreme for the month (last occurrence if more than one)
 T = Trace precipitation amount
 + = also occurs on earlier date
 FG+ = Heavy fog, visibility 0.25 miles or less
 BLANK entries denote missing or unreported data

Resultant wind is the vector sum of the wind speeds and directions divided by the number of observations.

Wind direction is recorded in tens of degrees (2 digits) clockwise from true north. '00' = calm, 'VR' = variable.

Precipitation is for the 24-hour period ending at the time indicated in the column heading.

Water Equivalent of snow on the ground is reported only when the depth is 2 or more inches.

NORMALS ARE FOR THE YEARS 1971–2000

WEATHER NOTATIONS

QUALIFIER	WEATHER PHENOMENA		
	PRECIPITATION	OBSCURATION	OTHER
BC Patches	DZ Drizzle	BR Mist	DS Duststorm
BL Blowing	GR Hail	DU Widespread Dust	FC Funnel Cloud
DR Low Drifting	GS Small Hail and/or Snow Pellets	FG Fog	+FC Tornado Waterspout
FZ Freezing	IC Ice Crystals	FU Smoke	PO Well-Developed Dust/Sand Whirls
MI Shallow	PL Ice Pellets	HZ Haze	
PR Partial	RA Rain	PY Spray	SQ Squalls
SH Shower(s)	SG Snow Grains	SA Sand	SS Sandstorm
TS Thunderstorm	SN Snow	VA Volcanic Ash	GL Glaze
VC In the Vicinity	UP Unknown Precipitation		
Intensity (as indicated on pages 4 to 6): '+' = Heavy '-' = Moderate '--' = Light			

MARQUETTE, MI JANUARY 2003

Sky Cover is the mean cloud cover observed from sunrise to sunset (SR–SS), or midnight to midnight (MN–MN).

Satellite data are used to derive cloudiness above 12,000 feet. Effective Cloud Amount is based on the cloud cover and the transparency of the clouds within the satellite field of view (approx. 31x31 miles).

Sky Condition is based on the SR–SS sky cover. Clear = 0–2 oktas, Partly Cloudy = 3–6 oktas, Cloudy = 7–8 oktas.

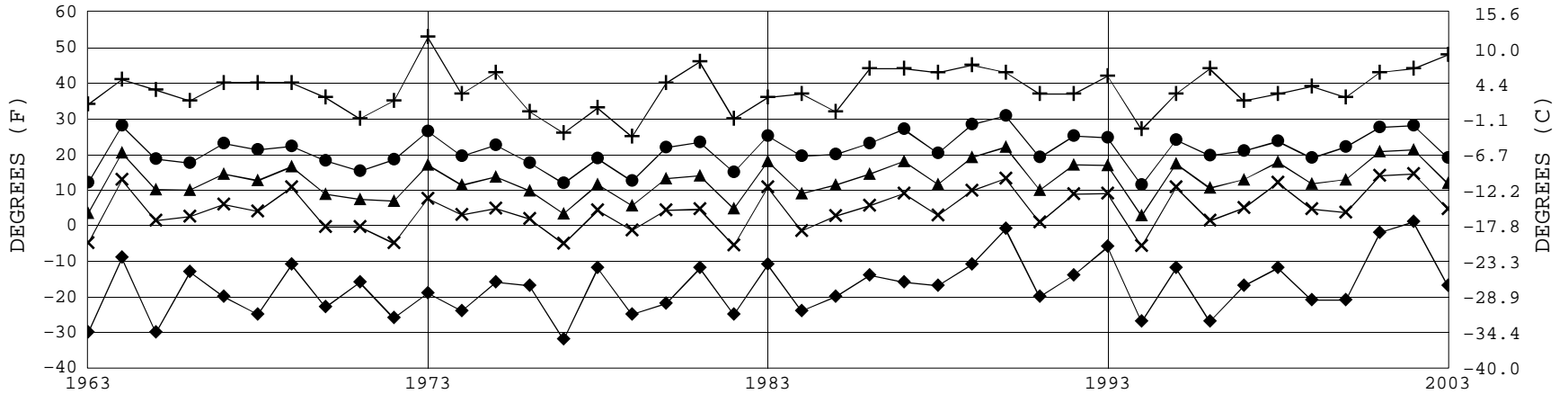
A Heating (Cooling) Degree Day is the difference between the average daily temperature and 65 degrees F. The HDD season begins July 1, the CDD season begins January 1.

Dew Point is the temperature to which the air must be cooled to achieve 100% relative humidity. Wet Bulb is the temperature the air would have if cooled at constant pressure by evaporation of moisture into it, to 100% relative humidity.

ADDITIONAL NOTES:

DATE	SUNSHINE		CLOUDINESS (OKTAS)				VISIBILITY (MILES)		RESERVED
	TOTAL MINUTES	PERCENT POSSIBLE	SR–SS		MN–MN		MINIMUM	MAXIMUM	
			SKY COVER	SATELLITE	SKY COVER	SATELLITE			
01	409	79							
02	461	89							
03	521	100							
04	461	88							
05	0	0							
06	452	86							
07	445	85							
08	500	95							
09	425	80							
10	200	38							
11	433	81							
12	448	84							
13	105	20							
14	490	91							
15	490	91							
16	483	89							
17	425	78							
18	147	27							
19	326	60							
20	350	64							
21	475	86							
22	410	74							
23	261	47							
24	503	90							
25	504	90							
26	540	96							
27	442	78							
28	492	86							
29	570	100							
30	274	48							
31	468	81							
MONTHLY AVGS									
SUNSHINE (MINUTES)									
Total: 12510 Possible: 16890 Percent Possible: 74									
NUMBER OF DAYS WITH:									
SKY CONDITION									
CLR PTLY CLDY CLOUDY MISSING 31									
MINIMUM VISIBILITY (MILES)									
<=0.25 <=3.0 >=7.0									

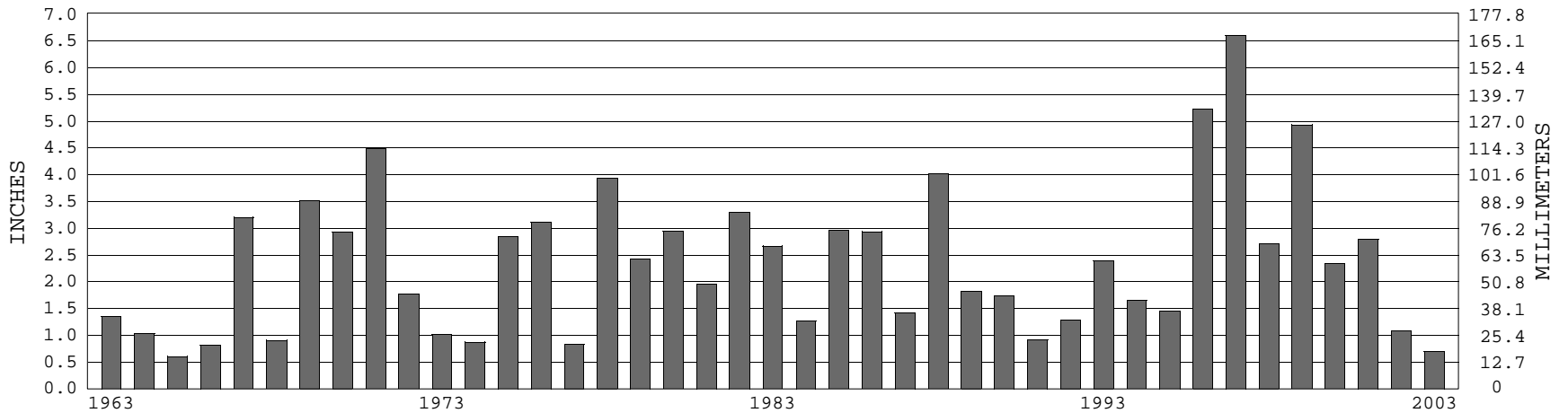
MARQUETTE, MI JANUARY TEMPERATURES



+ Extreme Max. ● Mean Max. ▲ Mean × Mean Min. ◆ Extreme Min.

Long-Term (1963-2003) Mean: 12.7 1961-1990 Normal: 11.5

MARQUETTE, MI JANUARY PRECIPITATION



Long-Term (1963-2003) Mean Monthly Total: 2.36

1961-1990 Normal: 2.60



JANUARY 2003

MARQUETTE, MI

LOCAL CLIMATOLOGICAL DATA

NOAA, National Climatic Data Center

I certify that this is an official publication of the National Oceanic and Atmospheric Administration (NOAA). It is compiled using information from weather observing sites operated by NOAA – National Weather Service / Department Of Transportation – Federal Aviation Administration and received at the National Climatic Data Center (NCDC), Asheville, North Carolina 28801.

DIRECTOR

NCDC now offers an annual online subscription for the **Edited Local Climatological Data Publication**. When you purchase this subscription service, you will have **immediate online access** to all previous publications back to July 1996 and all publications thereafter until the expiration of the subscription. Your subscription is valid for one year after purchase. **The total cost is \$29 for online delivery (including back issues) compared to \$34 for offline delivery.** To order this and other subscriptions on-line with your credit card, go to: www.ncdc.noaa.gov and choose subscriptions.

We welcome your questions or comments, please contact us at
Toll Free Number (866) 742-3322 (voice)
Fax Number :(304) 726-4409
TDD : 828-271-4010
or Email : ncdc.info@noaa.gov
Local Climatological Data is available at www.ncdc.noaa.gov

For address correction, please return a photocopy of this page to Subscription Services indicating changes

NCDC Subscription Services Center
310 State Route 956 Building 300
Rocket Center, WV 26726

OFFICIAL BUSINESS. PENALTY FOR PRIVATE USE \$300

FIRST CLASS
POSTAGE AND FEES PAID
NOAA
PERMIT G-19