

## Contents

- 2-D plots.
- 2-D plots with pcolor - shading flat
- 2-D plots with irregular grids

## 2-D plots.

examples of:

contour, contourf, imagesc, pcolor

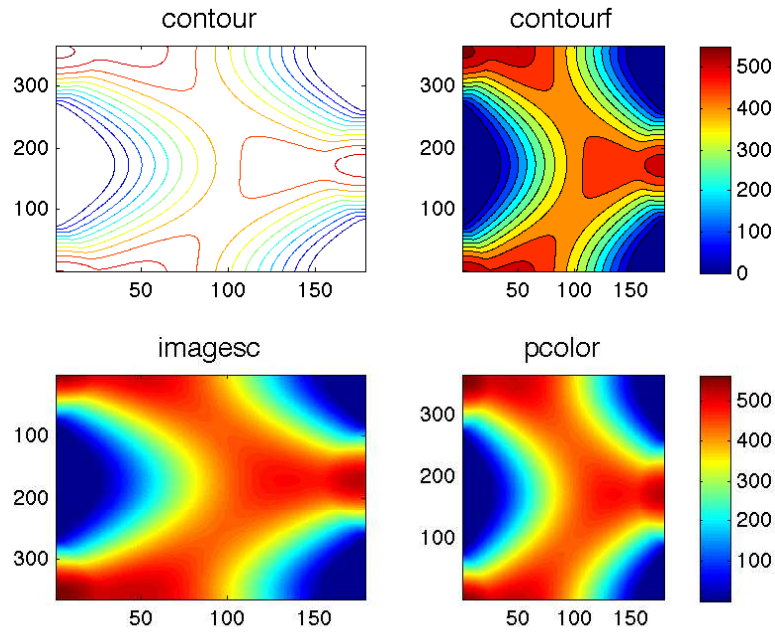
```
load example_display_data.mat
```

```
subplot(2,2,1);  
contour(annual_avg_insolation);  
title('contour', 'FontSize', 14)
```

```
subplot(2,2,2)  
contourf(annual_avg_insolation)  
title('contourf', 'FontSize', 14)  
colorbar
```

```
subplot(2,2,3)  
imagesc(annual_avg_insolation)  
title('imagesc', 'FontSize', 14)
```

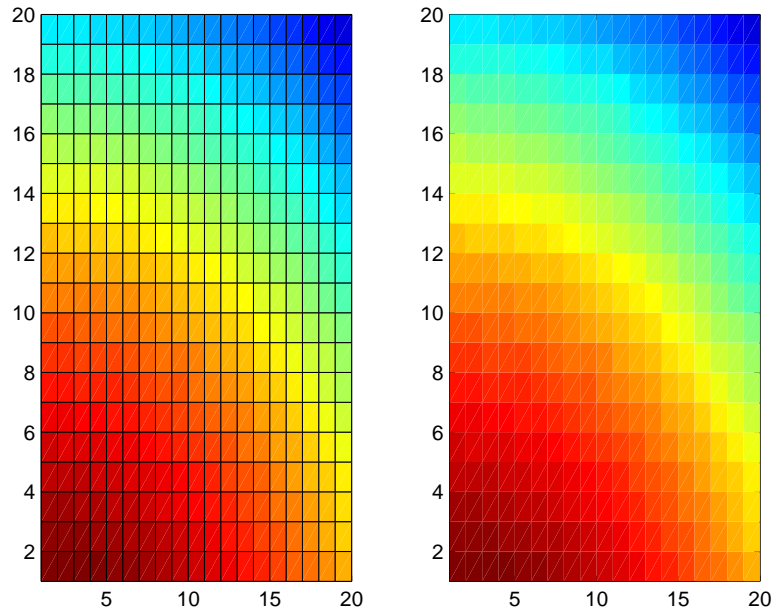
```
subplot(2,2,4)  
pcolor(annual_avg_insolation)  
shading flat  
title('pcolor', 'FontSize', 14)  
colorbar
```



## 2-D plots with pcolor - shading flat

```
subplot(1,2,1)
pcolor(annual_avg_insolation(1:20,1:20));
```

```
subplot(1,2,2)
pcolor(annual_avg_insolation(1:20,1:20));
shading flat
```

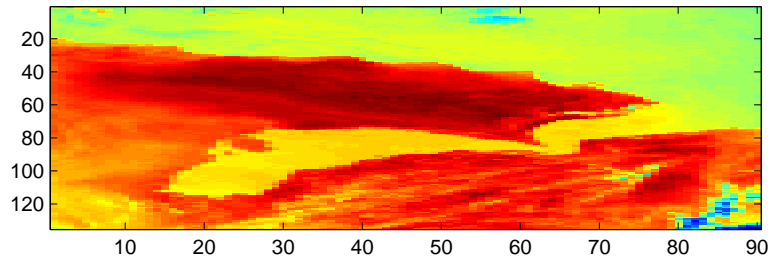


## 2-D plots with irregular grids

```
subplot(2,1,1)
imagesc(IRimage);
title('imagesc - display in Pixels', 'FontSize', 14);
```

```
subplot(2,1,2)
pcolor(Longitude, Latitude, IRimage);
shading flat
title('pcolor - display on lat / lon grid', 'FontSize', 14);
```

imagesc – display in Pixels



pcolor – display on lat / lon grid

